



## **Construction and reconstruction of anti-nuclear shelters for civil protection of the population and military underground shelters**

TEBRIX is the largest manufacturer of underground nuclear shelters in the Czech Republic.  
We manufacture shelters of various classes of resistance according to ČSN 73 9010  
Designing and construction of buildings for civil protection of the population.

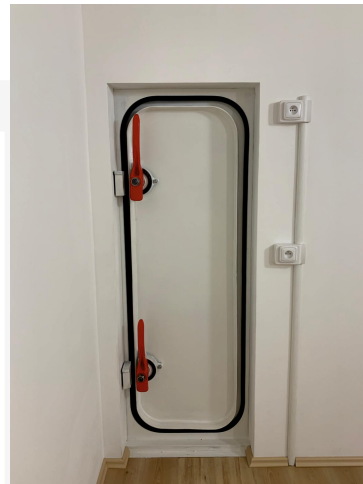
As the only company in the Czech Republic, we deal with complete reconstructions  
of existing large-capacity shelters in the Czech Republic as well as in other European countries.



**specializes in complete turnkey reconstruction of underground anti-nuclear shelters** from the initial revision, through all construction work, complete equipment with all technologies such as air, water, independent energy, up to the protection of the individual.



**manufactures and renovates** anti-pressure and gas-tight doors, hatches and closures. These are designed with a back pressure resistance of 200 KPa and higher. We also produce doors and hatches in ballistic resistance FB4/BR4, FB6/BR6, TBO3, TBO6 according to ČSN 395360.



**develops specialized water treatment and filtration plants** for the treatment of drinking and technological water from any contaminated water source. Especially with radiation, biological and chemical warfare agents, and all this without an input water analysis.





**supplies CBRN Filtroventilation systems**, which consist of fans, filters, overpressure and pressure valves, overpressure measurement, complete distribution, etc. The practice is that we do not need to supply a new (very expensive) air system, but we will only replace damaged and otherwise degraded components with new ones that fit the existing air distributions in KCO. For smaller enclosures we supply **Firbach 100 units**.



**supplies detection devices** for detecting biological and chemical warfare agents. The detector can detect the concentration of given substances in the air directly from the Shelters, so it is not necessary to put on gas masks and anti-chemical suits and leave the safe area when detecting the condition, as was the case previously when using **Detehit**.



**supplies ISO security stations**, intended for armies and specialized industries to the whole world. These are mobile sites that can be transported by car, plane and ship.

## Types of modules:

- With ballistic protection (headquarters, ammunition storage) PHOTO
- Retractable guard towers (ballistic protection option)
- Emergency survival modules
- Arms and ammunition depots
- Accommodation units
- Sanitary units (WC, showers)
- Field kitchen
- Medical units
- Operating theaters and other specialized equipment
- Decontamination units

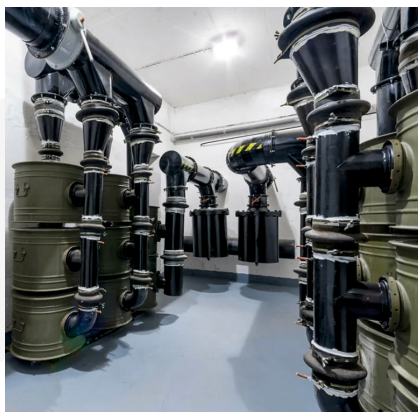


## Turnkey work:

- Production and renovation of anti-pressure doors and other safety closures
- Renovation of the complete CBRN air system
- Decontamination areas
- Water treatment and filtration
- Backup source of electricity energy
- Measurement of outdoor radiation and other dangerous substances (chemical and biological warfare agents)

- Radio communication
- Personal protection of the individual (masks, filters, suits, ...)
- Reconstruction of building parts (floors, walls, ceilings)
- Reconstruction of water, waste, electricity
- Creation of complete project documentation
- Creation of manuals and training of shelter operators

Před



Po

Před



Po

Před



Po

Před



Po

